

WE CREATE SOLUTIONS.

Post mortem instruments and autopsy saws



KUGEL Medizintechnik Vertriebs GmbH
Hermann-Köhl-Straße 2A
DE-93049 Regensburg
Germany

Tel. +49/9 41/20 86 48-0
Fax +49/9 41/20 86 48-29
www.KUGEL-medical.de



KUGEL
medical
■ ■ ■ ■

Post Mortem Instrument Set 1



Post Mortem Instrument Set 1 consisting of:

- 1 pc. Scalpel with metal handle, cutting length 50 mm
 - 1 pc. Scalpel with metal handle, cutting length 50 mm
 - 1 pc. Scalpel with metal handle, cutting length 50 mm
 - 1 pc. Cartilage knife with metal handle, cutting length 55 mm
 - 1 pc. VIRCHOW Autopsy knife with metal handle, cutting length 85 mm
 - 1 pc. Incision scissors, 145 mm
 - 1 pc. Bone shears 225 mm
 - 1 pc. Bowel scissors, 210 mm
 - 2 pc. Dissecting forceps, length 130 mm
 - 1 pc. Bone saw 350 mm, incl. Spare saw blade
 - 1 pc. Metal mallet, Bergmann, 235 mm, 300 gram
 - 2 pc. Osteotom, 130 mm
 - 1 pc. Rachiotom 220 mm
 - 2 pc. Blow pipe, straight, double, 104 mm
 - 2 pc. Retractors, double, 65 mm
 - 2 pc. Probes 200 / 1,5 mm
 - 1 pc. Surgical needles Fig 4 (12 pc.)
 - 1 pc. Surgical needles Fig 8 (12 pc.)
 - 1 pc. Folding ruler 300 mm
 - 1 pc. Measuring glass 100 ccm
- Article-No.: 020.010.195

Alternative:

- Post Mortem Instrument Set 1 in aluminium case
Artikel-No.: 020.010.400

KUGEL Medizintechnik Vertriebs GmbH
Hermann-Köhl-Str. 2A
DE – 93049 Regensburg/Germany

Phone +49/9 41/20 86 48-0
Fax +49/9 41/20 86 48-29
www.KUGEL-medical.de



KUGEL
medical
■ ■ ■ ■

Post Mortem Instrument Set 2



Post Mortem Instrument Set 2 consisting of:

- 1 pc. Autopsy knife with metal handle, cutting length 195 mm
- 1 pc. Dissecting knife, cutting length 100 mm
- 1 pc. Autopsy knife with wooden handle, cutting length 110 mm
- 1 pc. Cartilage knife with wooden handle, Cutting length 70 mm
- 2 pc. Incision scissors, 145 mm
- 1 pc. Bowel scissors, 210 mm
- 1 pc. Dissecting forceps, standard, length 160 mm
- 1 pc. Dissecting forceps, 2 x 3 teeth, length 145 mm
- 1 pc. Dissecting forceps 1 x 2 teeth, length 250 mm
- 1 pc. Directors 160 mm
- 2 pc. Probes 250 mm / 1,5 mm
- 1 pc. Post mortem needles, 115 mm (12 pc.)
- 1 pc. Folding ruler 300 mm
- 1 pc. Steel tape measure 1,5 m
- 1 pc. Bow Saw, 420 mm incl. Spare saw blade
- 1 pc Bone shears 230 mm
- 1 pc. Bone holding forceps, Langenbeck 215 mm
- 1 pc. Chisel, 245 mm
- 1 pc. Metal mallet, Ombredanne, 240 mm, 550 gram
- 1 pc. Skull breaker 140 mm
- 1 pc. Microscopic needle holder with plastic handle, 240 mm
- 1 pc. Dermatograph, red

Article-No.: 020.010.196

Alternative:

Post Mortem Instrument Set 2 in aluminium case

Article-No.: 020.010.405

KUGEL Medizintechnik Vertriebs GmbH
Hermann-Köhl-Str. 2A
DE – 93049 Regensburg/Germany

Phone +49/9 41/20 86 48-0
Fax +49/9 41/20 86 48-29
www.KUGEL-medical.de



KUGEL
medical
■ ■ ■ ■

Water proof Autopsy Saw with vacuum system



Handpiece of SF-4000



Removable exhaust pipe

Try washing any other electric oscillating saw while it is still switched on and you would be advised to check your life assurance! Amazingly the SF-4000 is the only electric medical cutter with a waterproof hand piece that can be immersed and sterilized without disassembly, despite the fact that good medical practice demands total cleanliness.

Designed for the hospital environment, the SF-4000 is the most silent medical cutter on the market. For the cast room this reduces operator fatigue and helps keep the patients calm too. Toxic dust, finely divided silica, and other hazardous airborne particles are all removed at source by the SF's optional vacuum system which filters particles to 0,6 microns. The negative pressure extraction unit is a typical example of SF's thoughtful design, allowing operators to change the bag without risk of losing the contents.

With total elimination of the aerosol effect from a fully enclosed hand piece, the SF-4000 offers the ultimate in safety. From the one touch switch which operates the entire mobile system, to the balanced heavy duty hand piece for greater cutter control the SF-4000 demonstrates the advantages of starting with a „clean sheet“ design for specific medical uses.

Widely used in hospitals internationally, the SF-4000 has proven to be more than powerful enough for both the demands of Autopsy and Necropsy. In comparison rival cutters are often an adaptation of other equipment. Exposed noisy cooling fan intakes, flying dust and potentially lethal voltages are just some of the penalties you pay for choosing a compromise in cutter design. So why not put our claims to test with either the full vacuum filtration system or the compact portable version.

Technical data see back page

KUGEL Medizintechnik Vertriebs GmbH
Hermann-Köhl-Str. 2A
DE – 93049 Regensburg/Germany

Phone +49/9 41/20 86 48-0
Fax +49/9 41/20 86 48-29
www.KUGEL-medical.de



KUGEL
medical
■ ■ ■ ■

Water proof Autopsy Saw with vacuum system

Technical data:

Vacuum unit:	
Rated:	900 Watt
Container capacity:	7 litres
Air Volume Open (max):	32 litres/sec.
Max. Vacuum Closed:	1650 mm WG
Filtration:	99,997 % at 0.6 micron to BS3928
Dimensions:	760 mm
Diameter:	225 mm
Weight:	11,5 kg
Voltage:	230 Volt / 50 Hz

Power supply:

Speed:	230 Volt / 50 Hz
Output to Saw:	40 Volt DC
Enclosure:	BS5490, IEC529, DIN 40050
Protected:	IP 44
Weight:	1,7 kg
Cable:	3,5 meters

Hand piece:

Motor:	DC, permanent Magnet
Speed:	40 Volt DC / 0,75 Amp
Typical load:	1,5 Amp
Speed:	ca. 12000/min.
Construction:	Anodised aluminium body with 4 bearing sealed mechanism protected to IP 67
Audio output:	37db(A)
Weight:	1,4 kg
Type:	SF-4000
Artikel-No.:	020.030.010

Accessories:

10 pieces	Saw Blade Circular 64 mm Dia.	Artikel-Nr.: 020.030.015
10 pieces	Saw Blade Circular 76 mm Dia.	Artikel-Nr.: 020.030.020
10 pieces	Saw Blade Segmented 51 mm Radius	Artikel-Nr.: 020.030.025
1 pieces	Service Kit consists of:	Artikel-Nr.: 020.030.030
	10 pc. Vacuum Hood	
	50 pc. Paper Filter Bag	
	1 pc. Cloth Filter bag	
	1 pc. Micron Filter	
	1,5 m Vacuum Pipe	

KUGEL Medizintechnik Vertriebs GmbH Phone +49/9 41/20 86 48-0
Hermann-Köhl-Str. 2A Fax +49/9 41/20 86 48-29
DE – 93049 Regensburg/Germany www.KUGEL-medical.de



KUGEL
medical
■ ■ ■ ■

Oscillating Autopsy Saw HB-740



Oscillating Autopsy Saw with exchangeable saw blades, ball bearing mounted, well ventilated motor for AC 230 Volt with switch housed in a shock-proof, insulated casing. Saw head made of light metal, gears permanently lubricated. Electrical connection cord fitting with plug, length ~ 5 m. For sterilizing the saw head can be removed. A speed controller facilitates exact setting so that the rotations of the saw blade can be adjusted precisely to meet the respective requirements.

The Autopsy Saw will be delivered with:

- 1 pc. Autopsy Saw HB -740
- 1 pc. round saw blade d ~ 50 mm
- 1 pc. deep segment saw blade (small)
- 1 pc. deep segment saw blade (broad)
- 1 set screw-wrench for exchange of saw blades

Technical Data:

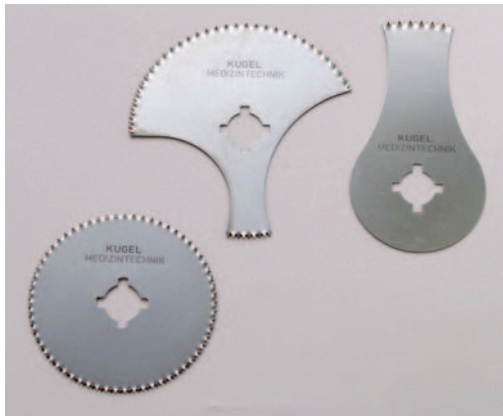
Voltage:	230 Volt / 50 Hz / 125 Watt
Oscillation range:	12000 - 21000 / min
Typ:	HB-740
Article No.:	020.010.200

KUGEL Medizintechnik Vertriebs GmbH Phone +49/9 41/20 86 48-0
Hermann-Köhl-Str. 2A Fax +49/9 41/20 86 48-29
DE – 93049 Regensburg www.KUGEL-medical.de



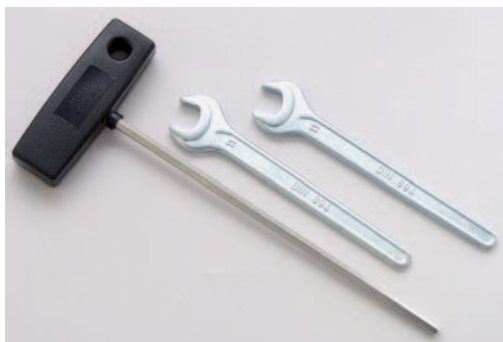
KUGEL
medical
■ ■ ■ ■

Oscillating Autopsy Saw HB-740 / accessories



Saw blade for oscillating autopsy Saw HB 740

Round saw blade HB 50 Article No.: 020.010.215
Segment saw blade HB 500 Article No.: 020.010.205
Deep cutting blade HB 502 Article No.: 020.010.210



Screw wrench ESP 510

Article No.: 020.010.225



Case for Autopsy saw HB 740

Article No.: 020.010.230

KUGEL Medizintechnik Vertriebs GmbH
Hermann-Köhl-Str. 2A
DE – 93049 Regensburg

Phone +49/9 41/20 86 48-0
Fax +49/9 41/20 86 48-29
www.KUGEL-medical.de



KUGEL
medical
■ ■ ■ ■

Vacuum Cleaner for Autopsy saw HB 740



Vacuum Cleaner with Autopsy saw
HB 740

This versatile and compact vacuum cleaner with eco flat folding filter technique is specially designed for the suction/vacuuming of toxic dust, finely divided silica and other hazardous airborne particles. 99,97 % of all particles are filtered from the exhaust that are larger than 0,5 µm.

For rational working, the dust removal system comes with an outlet that is specially designed for Autopsy saw HB 740. Standby-mode takes over the automatic switching on and off of the suction/vacuum function. The saw can be laid on the vacuum cleaner.

The delivery includes:

- 1 pc. Vacuum Cleaner for Autopsy saw HB 740
- 1 pc. Hanger fixture for Autopsy saw HB 740
- 1 pc. Tube for Vacuum Cleaner
- 1 pc. Dust Removal Unit for Vacuum Cleaner
- 1 pc. Tools

Technical Data:

Suction performance:	1.380 Watts
Air flow rate:	57 l/min
Vacuum:	235 mbar
Main Supply:	230 Volt, 50 Hz
Container Volume:	35 Liter
Noise Level:	63 dB
Weight:	9,5 kg
Type:	HB-NR-Set-740
Article No.:	020.010.250

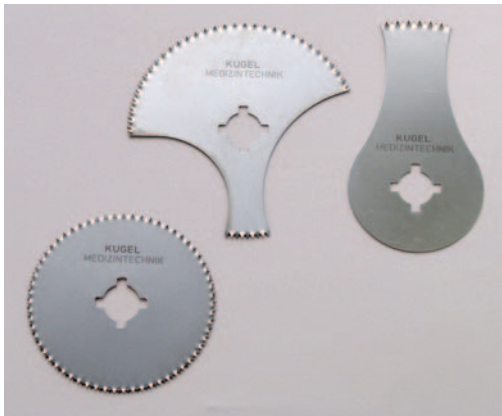
KUGEL Medizintechnik Vertriebs GmbH
Hermann-Köhl-Str. 2A
DE – 93049 Regensburg/Germany

Phone +49/9 41/20 86 48-0
Fax +49/9 41/20 86 48-29
www.KUGEL-medical.de



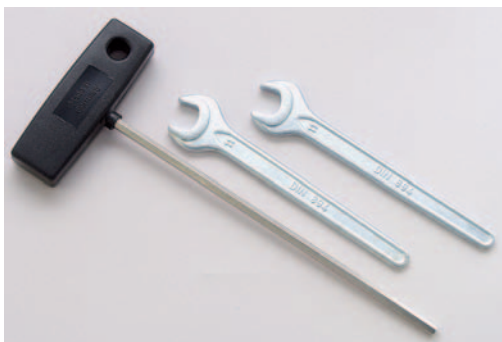
KUGEL
medical
■ ■ ■ ■

Vacuum Cleaner for Autopsy saw HB 740 accessories



Saw blade for oscillating autopsy Saw HB 740

Round saw blade HB 50 Article-No.: 020.010.215
Segment saw blade HB 500 Article-No.: 020.010.205
Deep cutting blade HB 502 Article-No.: 020.010.210



Screw wrench ESP 510

Article-No.: 020.010.225



Case for Autopsy saw HB 740

Article-No.: 020.010.230

KUGEL Medizintechnik Vertriebs GmbH
Hermann-Köhl-Str. 2A
DE – 93049 Regensburg/Germany

Phone +49/9 41/20 86 48-0
Fax +49/9 41/20 86 48-29
www.KUGEL-medical.de



KUGEL
medical
■ ■ ■ ■

Oscillating Autopsy Saw HB-740 with accu



Oscillating Autopsy Saw HB-740-Accu

The oscillating autopsy saw will be delivered with accu and exchangeable saw blades. The saw does not have a mains cable, this makes it ideal for mobile usage. The power supply comes through the accu with a high capacity. Therefore, it can be taken everywhere and it performs perfectly even though no electrical network is available. The saw head has pressure balance bore holes. As a result, the saw head can be sterilized.

The Autopsy Saw will be delivered with:

- 1 pc. Autopsy Saw HB-740
- 1 pc. round saw blade d - 50 mm
- 1 pc. deep segment saw blade (small)
- 1 pc. deep segment saw blade (broad)
- 1 set screw-wrench for exchange of saw blades
- 1 pc. charger for accu

Technical Data:

Voltage:	9,6 Volt
Oscillation range:	approx. 14500 / min
Type:	HB-740-Akku
Article No.:	020.010.290



Case for Autopsy saw HB 740
Article No.: 020.010.232
Type: K-HB-740-accu



spare rechargeable battery
Article No.: 020.010.295
Type: EA-HB-740

KUGEL Medizintechnik Vertriebs GmbH
Hermann-Köhl-Str. 2A
DE - 93049 Regensburg / Germany

Phone +49/941/208648-0
Fax +49/941/208648-29
www.KUGEL-medical.de



KUGEL
medical
■■■■

Cut-grinder abrasive cutter



This stationary abrasive cutter with fixed working table was developed for dissecting tissue, bones and composite materials, such as metallic and/or ceramic manufactures. A diamond-coated, highly precise cutting band is used for abrasive cutting. It produces precise sections with outstanding surface quality – a prerequisite for fast histological evaluation and further processing.

Protruding Qualities of cut-grinder:

- Overheating, chipping and microfractures in the specimen are ruled out
- The dissector uses a sturdy, adjustable spray guard that enables full view of the cutting area
- The cutting band is continuously rinsed and cooled with fresh water, a recirculating cooling system being foregone for hygienic reasons.
- The device is made entirely of stainless high-grade steel and is maintenance-free.

Technical Data:

Current:	Three-phase alternating current
Voltage:	230 Volt / 400 V
Frequency:	50 Hz
Rated current consumption:	3,6 A
Power consumption:	2,0 KW
Working table:	800 x 800 mm
Wheel diameter:	315 mm
Weight:	110 kg
Set-up surface area (WxD)	500 x 440 mm
External dimensions (WxD)	777 x 810 x 1600 mm
Cutting height:	max. 330 mm
Cutting wide:	max. 300 mm
Type:	TSG-CG
Article No.:	020.030.200

KUGEL Medizintechnik Vertriebs GmbH
Hermann-Köhl-Str. 2A
DE - 93049 Regensburg/Germany

Phone +49/941/20 86 48-0
Fax +49/941/20 86 48-29
www.KUGEL-medical.de



KUGEL
medical
■■■■

Handsaw with diamond-cutting blade



Diamond handsaw cut-ty



Mini Diamond handsaw cut-ty knife

The diamond handsaw is an ideal instrument for all working which cannot handle on a fixed diamond band saw. The angle of the cutting blade can be $0^\circ / 45^\circ / 90^\circ$.

Excellent feature of the handsaw:

- transportation without difficulty
- no first-cut
- no chipping and microfractures
- less cutting-waste
- Implants can be cutted

Diamond handsaw cut-ty:

Typ: DHS-cut-ty
Artikel-Nr.: 020.030.205

Mini diamond handsaw cut-ty knife:

Typ: DHS-cut ty knife
Artikel-Nr.: 020.030.210

KUGEL Medizintechnik Vertriebs GmbH
Hermann-Köhl-Str. 2A
DE - 93049 Regensburg/Germany

Phone +49/941/20 86 48-0
Fax +49/941/20 86 48-29
www.KUGEL-medical.de



KUGEL
medical
■ ■ ■ ■

Band saw K 220



The compact band saw K22 is ideal for cutting bones. The stainless steel housing is presented in an elegant design, secures high hygienically standards with its clogged working surface. The table top can be turned over and the doors can be opened wide for easy cleaning. The precise and narrow blade guide helps for a long lasting perfect cut. All movable parts can be easily cleaned as well as replaced. The saw convinces also through its safety: It contains a pusher for the material, safe coverings for the wheels and saw blade as well as a water safe electricity. The saw can also come with a fixed application and as an option with a frame construction. Long living bump rubbers care for a solid standing free of vibrations.

Technical Data:

Wheel diameter:	220 mm
Band saw blade dimensions:	1820 x 16 mm
Tape speed:	16 m/sec.
Admission for the height of the cut	230 mm
Admission for the breadth of the cut	185 mm
Dimension of the cut	215 mm
Table dimensions W/D/H:	405 x 555 x 385 mm
Total dimensions W/D/H:	515 x 595 x 930 mm
Engine output:	1,1 / IP 54
Engine speed:	1420 1/min
Voltage:	230 / 400 V
Nominal current:	4,7 / 2,7 V
Exhaust brake:	standard
Weight:	approx. 85 kg
Type:	K 220
Article No.:	020.020.010

KUGEL Medizintechnik Vertriebs GmbH
Hermann-Köhl-Str. 2A
DE - 93049 Regensburg / Germany

Phone +49/941/208648-0
Fax +49/941/208648-29
www.KUGEL-medical.de



KUGEL
medical
■ ■ ■ ■

Bone saw K 220



Blade guide

The band saw is equipped with a precise and narrow guide for the saw blade which ensure a secure cutting.



Cleaning

A perfect cleaning is ensured though the easy access by a wide opening of the doors and flipping up the table top.



Bandeinstellung

The saw band can be easily changed using the quick-release artifice. To set the tape run the upper disc is setted over the star grip backsided. The convex contact surface of the rustproof discs guarantees a secure positioning of the saw band and the preservation of the offset.



Optional

As an option we can offer you a frame construction suitable for the saw. The saw can be fixed with screws to this frame construction and is perfect for a working height of 920 mm.

Article-No. 020.020.015

Polyethylene cutting board



The cutting board is completely made of polyethylene. The top thickness is approx. 20 mm The board includes 4 small feet approx. 15 mm height and 25 mm diameter.

Technical Details

Dimensions W/D:	500 x 400 mm
Material:	20 mm PE-Material
Type:	PE-CB-50/40
Article-No.:	060.012.010

Accessoires

Ruler made of stainless steel with cm and mm measurements	
Length:	300 mm
Material:	Stainless Steel
Type:	LIN-SB 300
Article-No.:	060.019.031

Additional models see back page

Special bodies are available on inquiry

KUGEL Medizintechnik Vertriebs GmbH
Hermann-Köhl-Str. 2a
DE - 93049 Regensburg

Phone +49/941/20 86 48-0
Fax +49/941/20 86 48-29
www.KUGEL-medical.de



KUGEL
medical
■ ■ ■ ■

Polyethylene cutting board

Additional models

Polyethylene cutting board with groove

Dimensions W/D: 500 x 400 mm
Material: 20 mm PE-Material
Groove: ca. 16 mm wide and 10 mm low
Type: PE-CB-40/50-R
Article-No.: 060.012.013

Corian cutting board

Dimensions W/D: 500 x 400 mm
Material: 12 mm Corian
Typ: CO-CB-40/50
Article-No.: 060.012.009

Corian cutting board with groove

Dimension W/D: 500 x 400 mm
Material: 12 mm Corian
Groove: ca. 16 mm wide and 10 mm low
Typ: CO-CB-40/50-R
Article-No.: 060.012.003

Corian cutting board with black point

Dimension W/D: 500 x 400 mm
Material: 12 mm Corian
Application: round point with 140 mm diameter
Typ: CO-CB-40/50-B
Article-No.: 060.012.012

Corian cutting board with black point and groove

Dimension W/D: 500 x 400 mm
Material: 12 mm Corian
Application: round point with 140 mm diameter
Groove: ca. 16 mm wide and 10 mm low
Typ: CO-CB-40/50-BR
Article-No.: 060.012.002

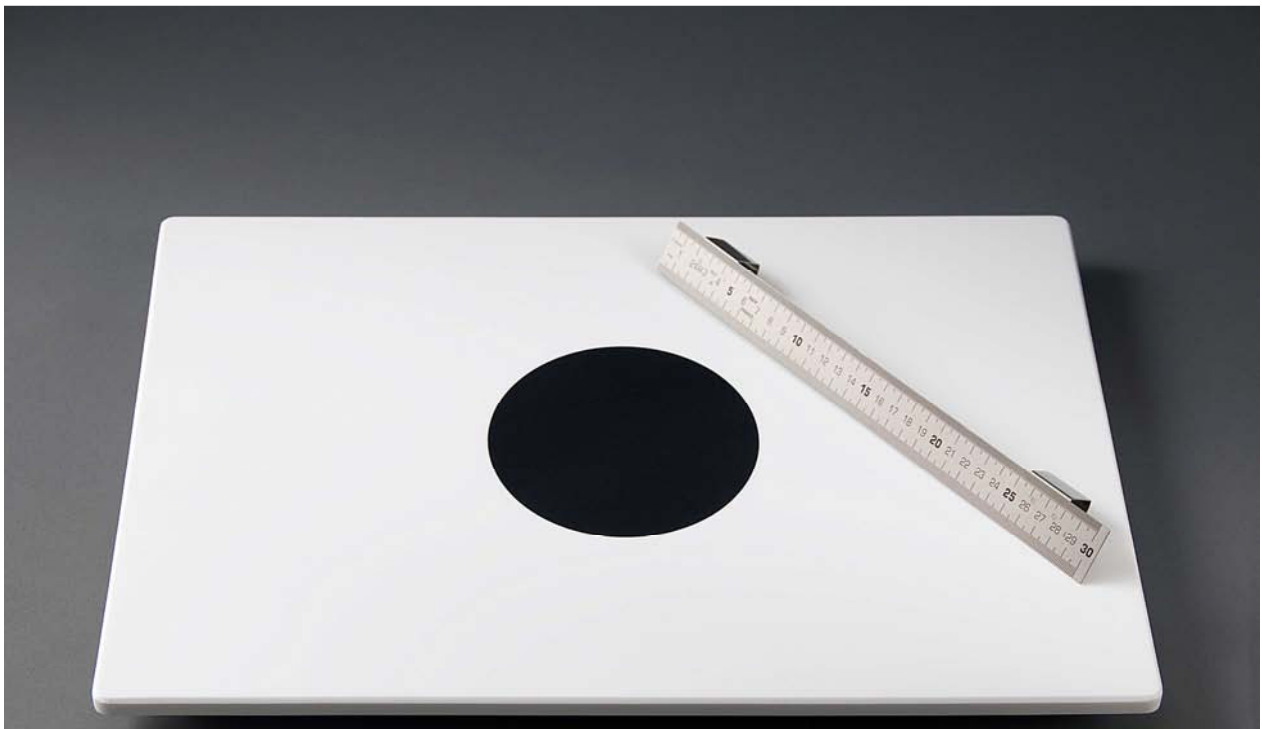
KUGEL Medizintechnik Vertriebs GmbH
Hermann-Köhl-Str. 2a
DE - 93049 Regensburg

Phone +49/941/20 86 48-0
Fax +49/941/20 86 48-29
www.KUGEL-medical.de



KUGEL
medical
■ ■ ■ ■

Corian cutting board with black point



The cutting board is completely made of corian. The top thickness is approx. 12 mm. The board includes 4 small feet approx. 25 mm height and 20 mm diameter.

Technical Details

Dimensions W/D:	500 x 400 mm
Material:	12 mm Corian
Application:	black point with 140 mm diameter
Type:	PE-CB-40/50-B
Article-No.:	060.012.012

Accessoires

Ruler made of stainless steel with cm and mm measurements	
Length:	300 mm
Material:	Stainless Steel
Type:	LIN-SB 300
Article-Nr.:	060.019.031

Additional models see back page

Special bodies are available on inquiry

KUGEL Medizintechnik Vertriebs GmbH
Hermann-Köhl-Str. 2a
DE - 93049 Regensburg

Phone +49/941/20 86 48-0
Fax +49/941/20 86 48-29
www.KUGEL-medical.de



KUGEL
medical
■ ■ ■ ■

Corian cutting board with black point

Additional models

Polyethylene cutting board

Dimensions W/D: 500 x 400 mm
Material: 20 mm PE-Material
Typ: PE-CB-50/40
Article-No.: 060.012.010

Polyethylene cutting board with groove

Dimensions W/D: 500 x 400 mm
Material: 20 mm PE-Material
Groove: ca. 16 mm wide and 10 mm low
Type: PE-CB-40/50-R
Article-No.: 060.012.013

Corian cutting board

Dimensions W/D: 500 x 400 mm
Material: 12 mm Corian
Typ: CO-CB-40/50
Article-No.: 060.012.009

Corian cutting board with groove

Dimension W/D: 500 x 400 mm
Material: 12 mm Corian
Groove: ca. 16 mm wide and 10 mm low
Typ: CO-CB-40/50-R
Article-No 060.012.003

Corian cutting board with black point and groove

Dimension W/D: 500 x 400 mm
Material: 12 mm Corian
Application: round point with 140 mm diameter
Groove: ca. 16 mm wide and 10 mm low
Typ: CO-CB-40/50-BR
Article-No: 060.012.002

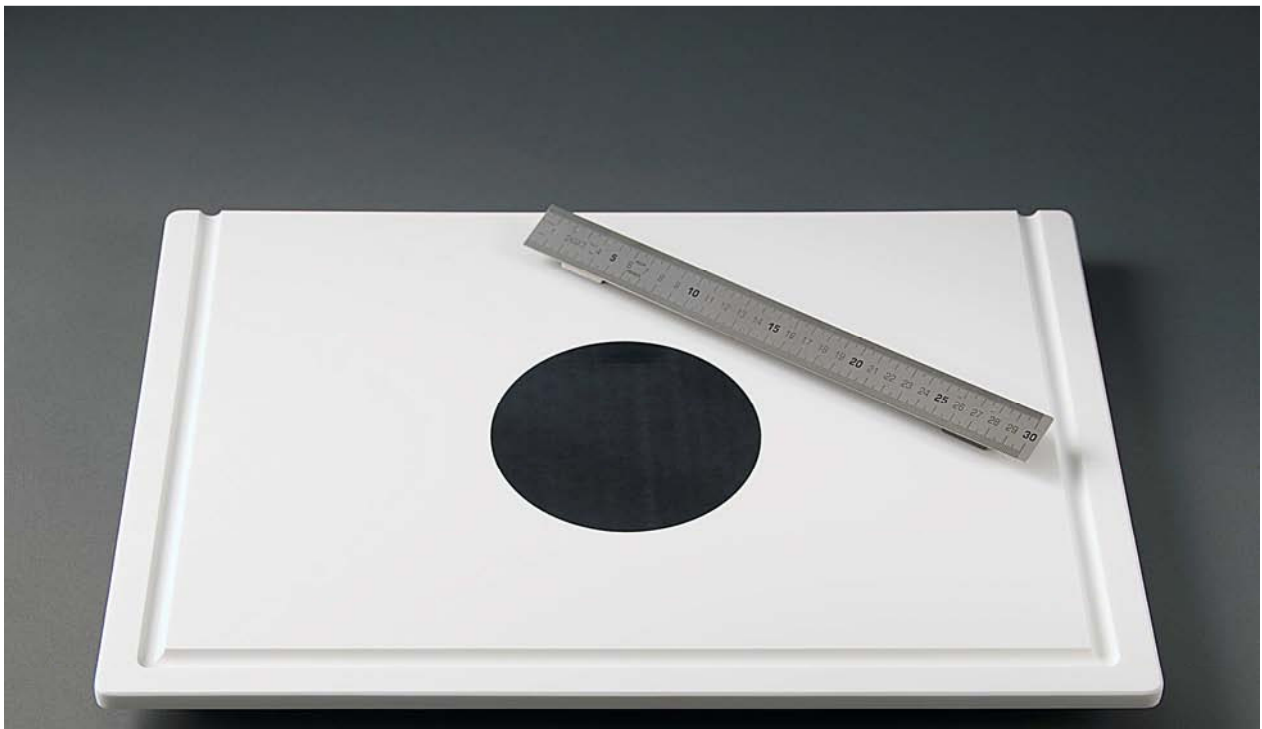
KUGEL Medizintechnik Vertriebs GmbH
Hermann-Köhl-Str. 2a
DE - 93049 Regensburg

Phone +49/941/20 86 48-0
Fax +49/941/20 86 48-29
www.KUGEL-medical.de



KUGEL
medical
■ ■ ■ ■

Corian cutting board with black point and groove



The cutting board is completely made of corian. The top thickness is approx. 12 mm. The board includes 4 small feet approx. 25 mm height and 20 mm diameter.

Technical Details

Dimensions W/D:	500 x 400 mm
Material:	12 mm Corian
Application:	black point with 140 mm diameter
Groove:	ca. 16 mm wide and 10 mm low
Type:	CO-CB-40/50-BR
Article-No.:	060.012.002

Accessoires

Ruler made of stainless steel with cm and mm measurements

Lenght:	300 mm
Material:	Stainless Steel
Type:	LIN-SB 300
Article-No.:	060.019.031

Additional models see back page

Special bodies are available on inquiry

KUGEL Medizintechnik Vertriebs GmbH
Hermann-Köhl-Str. 2a
DE - 93049 Regensburg

Phone +49/941/20 86 48-0
Fax +49/941/20 86 48-29
www.KUGEL-medical.de



KUGEL
medical
■ ■ ■ ■

Corian cutting board with black point and groove

Additional models

Polyethylene cutting board

Dimensions W/D: 500 x 400 mm
Material: 20 mm PE-Material
Typ: PE-CB-50/40
Article-No.: 060.012.010

Polyethylene cutting board with groove

Dimensions W/D: 500 x 400 mm
Material: 20 mm PE-Material
Groove: ca. 16 mm wide and 10 mm low
Type: PE-CB-40/50-R
Article-No.: 060.012.013

Corian cutting board

Dimensions W/D: 500 x 400 mm
Material: 12 mm Corian
Typ: CO-CB-40/50
Article-No.: 060.012.009

Corian cutting board with groove

Dimension W/D: 500 x 400 mm
Material: 12 mm Corian
Groove: ca. 16 mm wide and 10 mm low
Typ: CO-CB-40/50-R
Article-No.: 060.012.003

Corian cutting board with black point

Dimension W/D: 500 x 400 mm
Material: 12 mm Corian
Application: round point with 140 mm diameter
Typ: CO-CB-40/50-B
Article-No.: 060.012.012

KUGEL Medizintechnik Vertriebs GmbH
Hermann-Köhl-Str. 2a
DE - 93049 Regensburg

Phone +49/941/20 86 48-0
Fax +49/941/20 86 48-29
www.KUGEL-medical.de



KUGEL
medical
■ ■ ■ ■